

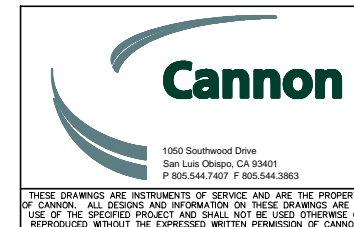
**DESIGN NOTES:**

DMA = 140,070 SF  
 Surface Area to Treat 100% of DMA = 4,100 SF  
 Biofiltration Planter Surface Area = 1,654 SF

Treatment Achieved = 32%

**NOTE:**

1. BIOFILTRATION PLANTER INCLUDES OVERFLOW DRAIN FOR HIGH VOLUME RAIN EVENTS.
2. SOIL SECTION AND UNDERDRAIN APPROACH AS SHOWN ON LIDI DETAIL 200.



LIDI SURF ST. BIOFILTRATION PLANTER CONCEPT 2: OPTIMAL SCALE CITY OF MORRO BAY, CA		
DRAWN BY JMD	DATE 2017-07-13	CA JOB NO. 170119
CHECKED BY	SCALE 1" = 20'	SHEET 2 OF 2

THESE DRAWINGS ARE INSTRUMENTS OF SERVICE AND ARE THE PROPERTY OF CANNON. ALL DESIGNS AND INFORMATION ON THESE DRAWINGS ARE FOR USE OF THE SPECIFIED PROJECT AND SHALL NOT BE USED OTHERWISE OR REPRODUCED WITHOUT THE EXPRESSED WRITTEN PERMISSION OF CANNON.





**Cannon**